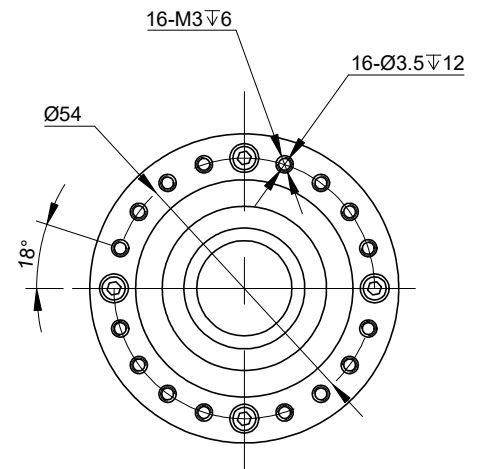
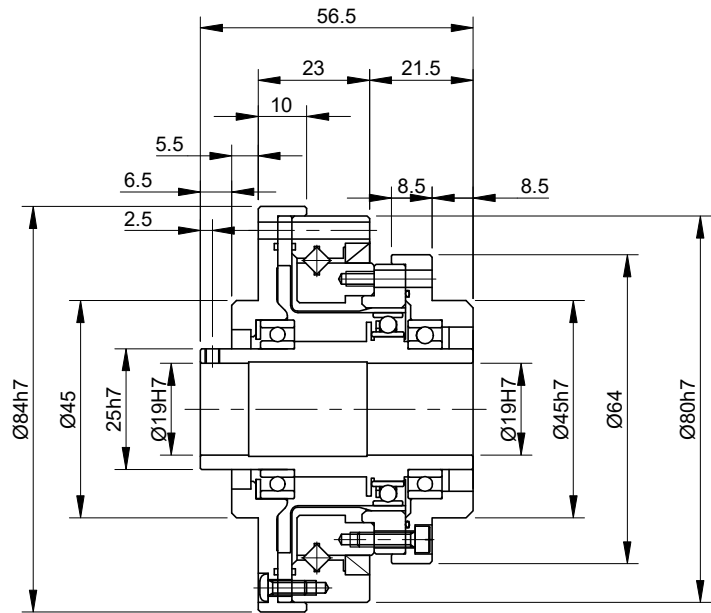
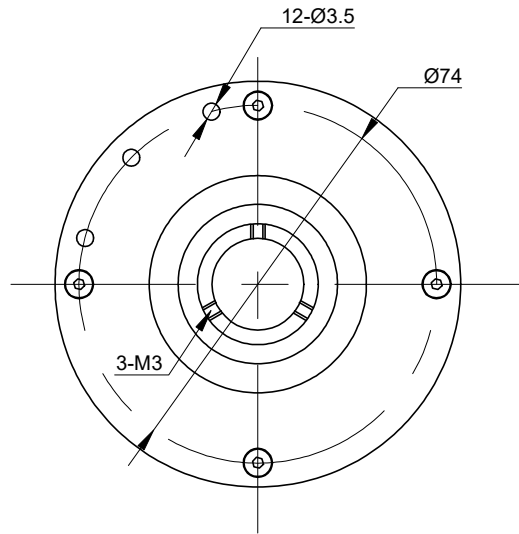


| REV. | REVISION RECORD | BY | DATE |
|------|-----------------|-----|-----------|
| 0 | ORIGIN | LDJ | 6.11.2024 |
| | | | |



| SPECIFICATION | CONNECTION | VALUE |
|--|------------|----------------------|
| GEAR RATIO | | 50 |
| BACKLASH@NO-LOAD(arcsec) | | <=20 |
| RATED TORQUE(INPUT SPEED 2000RPM)(Nm)[lb-in] | | 16.00[141.61] |
| MOMENT PERMISSIBLE TORQUE(Nm)[lb-in] | | 70.00[619.55] |
| PEAK START-STOP TORQUE(Nm)[lb-in] | | 34.00[300.93] |
| MAXIMUM INPUT SPEED ALLOWED(RPM) | | 7300 |
| AVERAGE INPUT SPEED ALLOWED(RPM) | | 3500 |
| WEIGHT(kg) | | 0.99 |
| LIFE(h) | | 10000 |
| AMBIENT TEMPERATURE | | 0°C~40°C[32°F~104°F] |

DIMENSIONS ARE IN MILLIMETERS.
TOLERANCES AS BELOW:
DECIMALS ANGLES
X ±0.5 ±2°
X.X ±0.25
X.XX ±0.13

THIRD ANGLE
PROJECTION



SIGNATURE

DATE

DRN

LDJ

6.11.2024

APVD

HW

6.12.2024

STEPPERONLINE®

HARMONIC REDUCER

HHT-17-50-III-D19