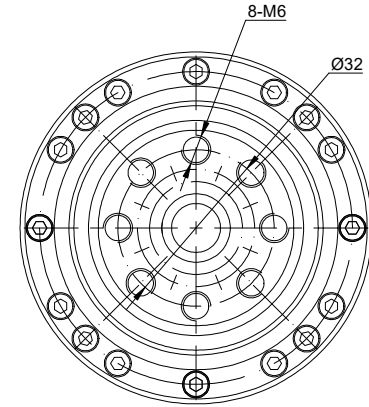
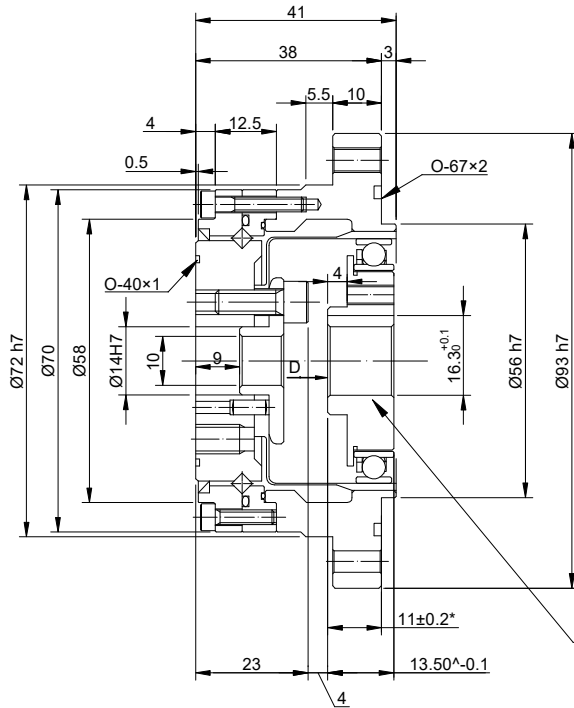
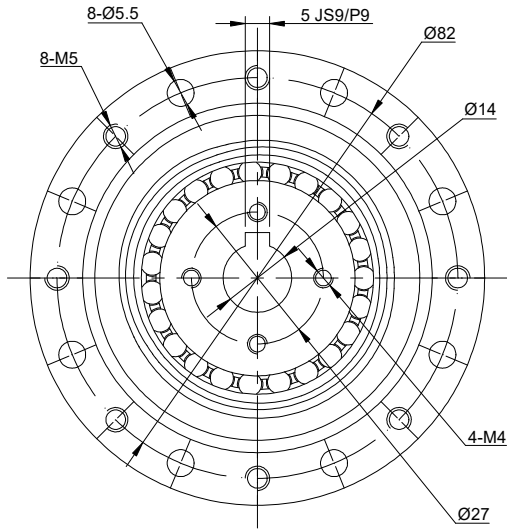
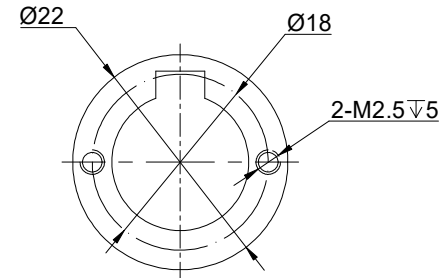


REV.	REVISION RECORD	BY	DATE
0	ORIGIN	HW	6.4.2024



WAVE GENERATOR-A



SPECIFICATION	CONNECTION	VALUE
GEAR RATIO		100
BACKLASH@NO-LOAD(arcsec)		<=20
RATED TORQUE(INPUT SPEED 2000RPM)(Nm)[lb-in]		40.00[354.03]
MOMENT PERMISSIBLE TORQUE(Nm)[lb-in]		147.00[1301.06]
PEAK START-STOP TORQUE(Nm)[lb-in]		82.00[725.76]
MAXIMUM INPUT SPEED ALLOWED(RPM)		6500
AVERAGE INPUT SPEED ALLOWED(RPM)		3500
WEIGHT(kg)		0.96
LIFE(h)		15000
AMBIENT TEMPERATURE		0°C~40°C[32°F~104°F]

DIMENSIONS ARE IN MILLIMETERS.
TOLERANCES AS BELOW:
DECIMALS ANGLES
X ±0.5 ±2°
X.X ±0.25
X.XX ±0.13

THIRD ANGLE
PROJECTION



SIGNATURE

DATE

DRN

HW

6.4.2024

APVD

LDJ

6.12.2024

STEPPERONLINE®

HARMONIC REDUCER

HSS-20-100-I-D14