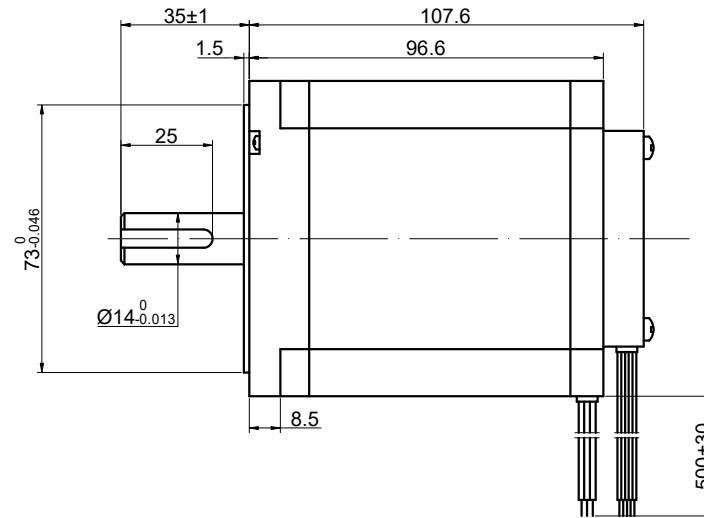
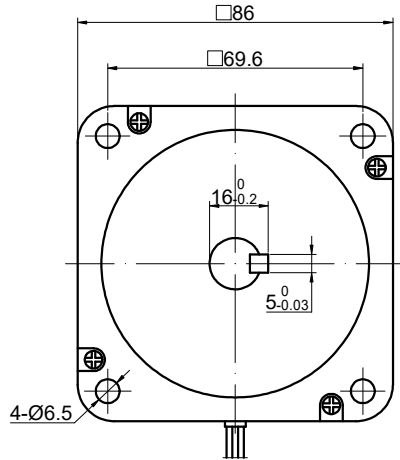


MODEL NO.	86BSA108-48-01	DWG NO.	A3162
-----------	----------------	---------	-------

CUSTOMER'S MODEL: NO MODEL
END COVER COLOR: GRAY

REV.	REVISION RECORD	BY	DATE
0	ORIGIN	ZPJ	5.10.2024



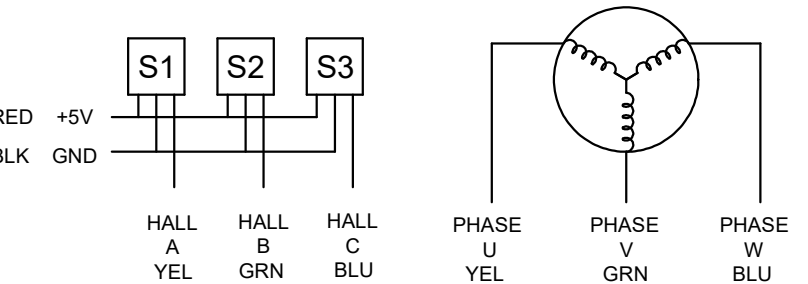
SPECIFICATION	VALUE
NO. of PHASES	3
NO. of POLES	8
RESISTANCE/PHASE(Ohms)@25°C	0.18±10%
INDUCTANCE/PHASE(mH)@1KHz	0.56±20%
RATED VOLTAGE(V)	48
RATED TORQUE(N.m)[lb-in]	1.40[12.39]
RATED POWER(W)	440
RATED SPEED(RPM)	3000±10%
RATED CURRENT(A)	11.70
NO LOAD SPEED(RPM)	3600±10%
WEIGHT(kg)	2.90
BACK EMF(V/krpm)	9.72±5%
SENSOR	HALL
AMBIENT TEMPERATURE	-10°C~50°C[14°F~122°F]
INSULATION CLASS	B 130°C[266°F]
TEMPERATURE RISE	MAX.80°C

COMMENT:
1.INSULATION RESISTANCE
(NORMAL TEMPERATURE AND HUMIDITY): 50 Mohm
2.DIELECTRIC STRENGTH: AC1200V CUT OFF
CURRENT 2mA FOR 1S

THIS DOCUMENT SHALL NOT BE REPRODUCED
NOR SHALL THE INFORMATION CONTAINED
HEREIN BE USED BY OR DISCLOSED TO
OTHERS UNLESS EXPRESSLY AUTHORIZED IN
BY WRITING STEPPERONLINE.

DIMENSIONS ARE IN MILLIMETERS.
TOLERANCES AS BELOW:
DECIMALS ANGLES
X ±0.5 ±2°
X.X ±0.25
X.XX ±0.13

THIRD ANGLE
PROJECTION



HALL LEAD: UL 1007 AWG 24

PHASE LEAD: UL3266 AWG 16

STEPPERONLINE®

BRUSHLESS DC MOTOR

86BSA108-48-01

SIGNATURE		DATE
DRN	ZPJ	5.10.2024
APVD	HW	5.10.2024

REV.	0	SCALE	1:1	DWG NO.	A3162
------	---	-------	-----	---------	-------