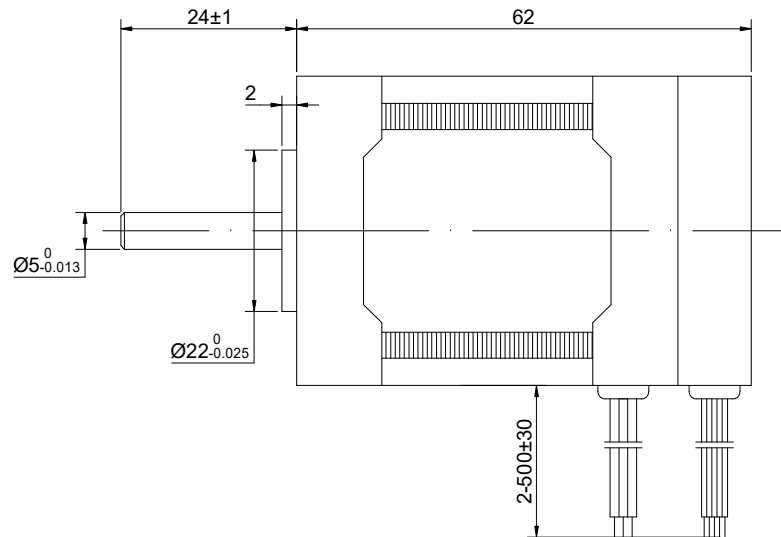
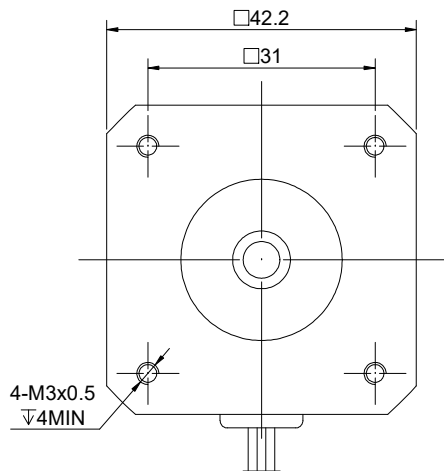


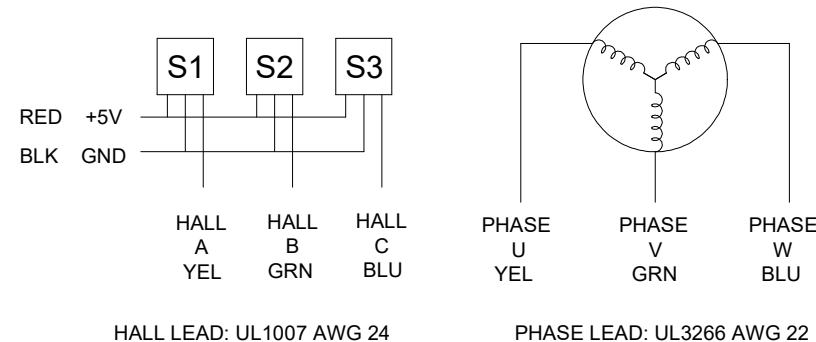
CUSTOMER'S MODEL: NO MODEL
END COVER COLOR: GRAY

REV.	REVISION RECORD	BY	DATE
0	ORIGIN	ZPJ	5.11.2024



SPECIFICATION	VALUE
NO. of PHASES	3
NO. of POLES	8
RESISTANCE/PHASE(Ohms)@25°C	3.10±10%
INDUCTANCE/PHASE(mH)@1KHz	1.50±20%
RATED VOLTAGE(V)	36
RATED TORQUE(N.m)[lb-in]	0.16[1.42]
RATED POWER(W)	50
RATED SPEED(RPM)	3000±10%
RATED CURRENT(A)	2.20
NO LOAD SPEED(RPM)	3900±10%
WEIGHT(kg)	0.42
BACK EMF(V/krpm)	6.63±5%
SENSOR	HALL
AMBIENT TEMPERATURE	-10°C~50°C[14°F~122°F]
INSULATION CLASS	B 130°C[266°F]
TEMPERATURE RISE	MAX.80°C

COMMENT: 1.INSULATION RESISTANCE (NORMAL TEMPERATURE AND HUMIDITY): 50 Mohm 2.DIELECTRIC STRENGTH: AC600V CUT OFF CURRENT 2mA FOR 1S	DIMENSIONS ARE IN MILLIMETERS. TOLERANCES AS BELOW: DECIMALS ANGLES X ±0.5 ±2° X.X ±0.25 X.XX ±0.13	
	THIRD ANGLE PROJECTION	
	SIGNATURE	DATE
THIS DOCUMENT SHALL NOT BE REPRODUCED NOR SHALL THE INFORMATION CONTAINED HEREIN BE USED BY OR DISCLOSED TO OTHERS UNLESS EXPRESSLY AUTHORIZED IN BY WRITING STEPPERONLINE.	DRN	ZPJ
	APVD	HW



STEPPERONLINE®
BRUSHLESS DC MOTOR

42BSA62-36-01

REV.	0	SCALE	1:1	DWG NO.	A3124
------	---	-------	-----	---------	-------