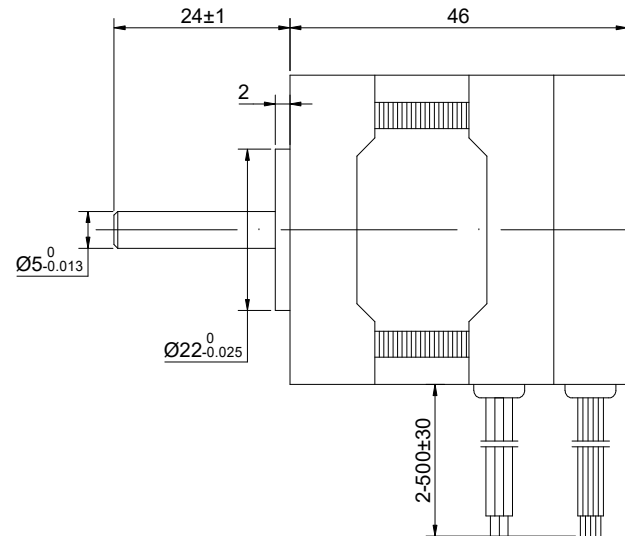
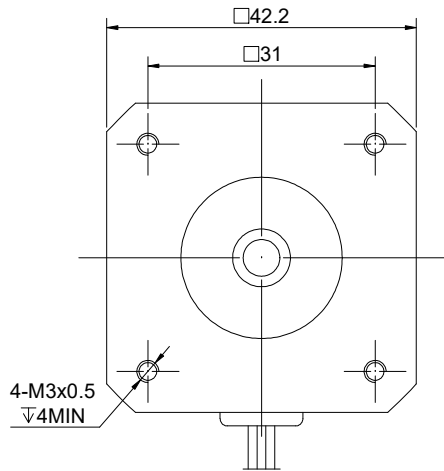


CUSTOMER'S MODEL: NO MODEL  
END COVER COLOR: GRAY

REV.	REVISION RECORD	BY	DATE
0	ORIGIN	ZPJ	5.11.2024



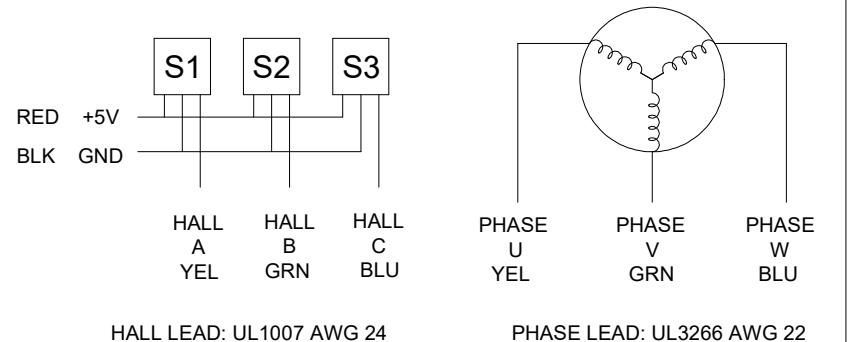
SPECIFICATION	VALUE
NO. of PHASES	3
NO. of POLES	8
RESISTANCE/PHASE(Ohms)@25°C	2.74±10%
INDUCTANCE/PHASE(mH)@1KHz	1.35±20%
RATED VOLTAGE(V)	24
RATED TORQUE(N.m)[lb-in]	0.08[0.71]
RATED POWER(W)	25
RATED SPEED(RPM)	3000±10%
RATED CURRENT(A)	1.80
NO LOAD SPEED(RPM)	3980±10%
WEIGHT(kg)	0.27
BACK EMF(V/krpm)	4.30±5%
SENSOR	HALL
AMBIENT TEMPERATURE	-10°C~50°C[14°F~122°F]
INSULATION CLASS	B 130°C[266°F]
TEMPERATURE RISE	MAX.80°C

COMMENT:  
1.INSULATION RESISTANCE  
(NORMAL TEMPERATURE AND HUMIDITY): 50 Mohm  
2.DIELECTRIC STRENGTH: AC600V CUT OFF  
CURRENT 2mA FOR 1S

THIS DOCUMENT SHALL NOT BE REPRODUCED  
NOR SHALL THE INFORMATION CONTAINED  
HEREIN BE USED BY OR DISCLOSED TO  
OTHERS UNLESS EXPRESSLY AUTHORIZED IN  
BY WRITING STEPPERONLINE.

DIMENSIONS ARE IN MILLIMETERS.  
TOLERANCES AS BELOW:  
DECIMALS ANGLES  
X ±0.5 ±2°  
X.X ±0.25  
X.XX ±0.13

THIRD ANGLE  
PROJECTION



**STEPPERONLINE®**  
**BRUSHLESS DC MOTOR**

42BSA46-24-01

SIGNATURE		DATE
DRN	ZPJ	5.11.2024
APVD	HW	5.11.2024

REV.	0	SCALE	1:1	DWG NO.	A3122
------	---	-------	-----	---------	-------