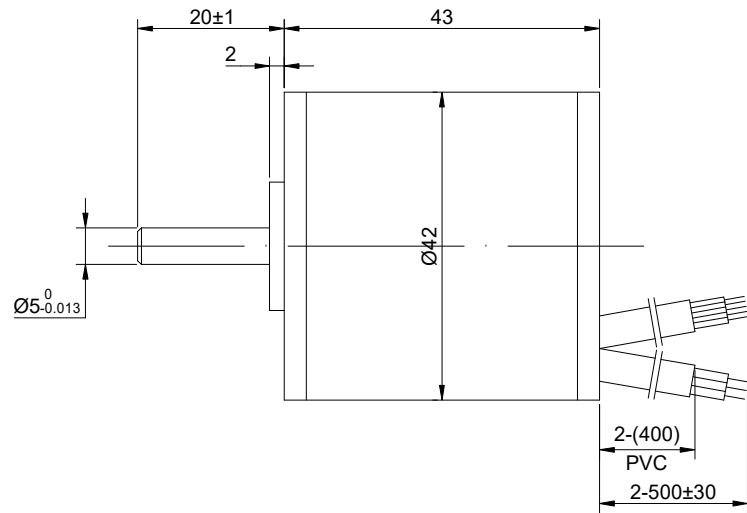
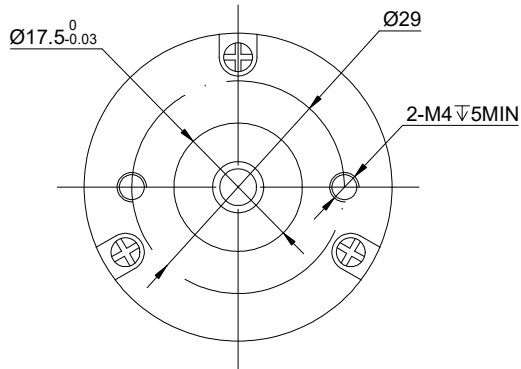


CUSTOMER'S MODEL: NO MODEL  
END COVER COLOR: GRAY

| REV. | REVISION RECORD | BY  | DATE      |
|------|-----------------|-----|-----------|
| 0    | ORIGIN          | ZPJ | 5.11.2024 |
|      |                 |     |           |



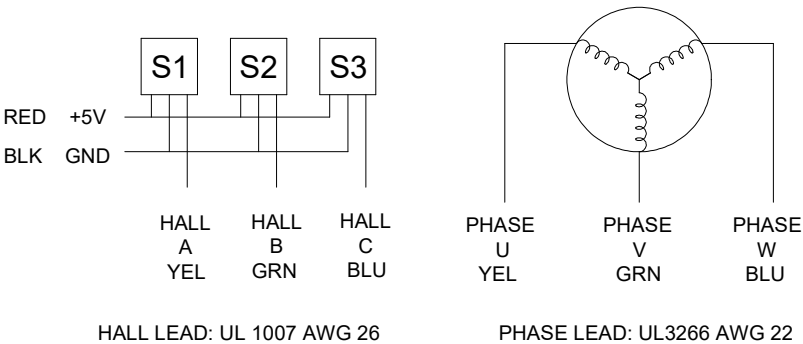
| SPECIFICATION               | VALUE                  |
|-----------------------------|------------------------|
| NO. of PHASES               | 3                      |
| NO. of POLES                | 4                      |
| RESISTANCE/PHASE(Ohms)@25°C | 6.28±10%               |
| INDUCTANCE/PHASE(mH)@1KHz   | 4.30±20%               |
| RATED VOLTAGE(V)            | 24                     |
| RATED TORQUE(N.m)[lb-in]    | 0.04[0.35]             |
| RATED POWER(W)              | 13                     |
| RATED SPEED(RPM)            | 3000±10%               |
| RATED CURRENT(A)            | 1.00                   |
| NO LOAD SPEED(RPM)          | 3950±10%               |
| WEIGHT(kg)                  | 0.19                   |
| BACK EMF(V/krpm)            | 4.30±5%                |
| SENSOR                      | HALL                   |
| AMBIENT TEMPERATURE         | -10°C~50°C[14°F~122°F] |
| INSULATION CLASS            | B 130°C[266°F]         |
| TEMPERATURE RISE            | MAX.80°C               |

COMMENT:  
1.INSULATION RESISTANCE  
(NORMAL TEMPERATURE AND HUMIDITY): 50 Mohm  
2.DIELECTRIC STRENGTH: AC600V CUT OFF  
CURRENT 2mA FOR 1S

THIS DOCUMENT SHALL NOT BE REPRODUCED  
NOR SHALL THE INFORMATION CONTAINED  
HEREIN BE USED BY OR DISCLOSED TO  
OTHERS UNLESS EXPRESSLY AUTHORIZED IN  
BY WRITING STEPPERONLINE.

DIMENSIONS ARE IN MILLIMETERS.  
TOLERANCES AS BELOW:  
DECIMALS ANGLES  
X ±0.5 ±2°  
X.X ±0.25  
X.XX ±0.13

THIRD ANGLE  
PROJECTION



HALL LEAD: UL 1007 AWG 26

PHASE LEAD: UL3266 AWG 22

STEPPERONLINE®

BRUSHLESS DC MOTOR

42BYA43-24-01

| SIGNATURE |     | DATE      |
|-----------|-----|-----------|
| DRN       | ZPJ | 5.11.2024 |
| APVD      | HW  | 5.11.2024 |

|      |   |       |     |         |       |
|------|---|-------|-----|---------|-------|
| REV. | 0 | SCALE | 1:1 | DWG NO. | A3134 |
|------|---|-------|-----|---------|-------|